

Cactuscape™

Miniature Desert Landscape



Cactuscape™ Kit

Instruction Manual

Contents

Kit Contents..... 2

Instructions: 2

 Planting: 2

Care: 3

 After planting: 3

 Watering: 3

 Light:..... 4

 Temperature and Humidity: 4

 Shaping and Pruning: 4

Thank you for ordering this Cactuscape kit!

Kit Contents

- Soil
- Watering/Soil cup (3 oz)
- Rocks
- Cactuses (the number depends on the item you purchased)
- Pot

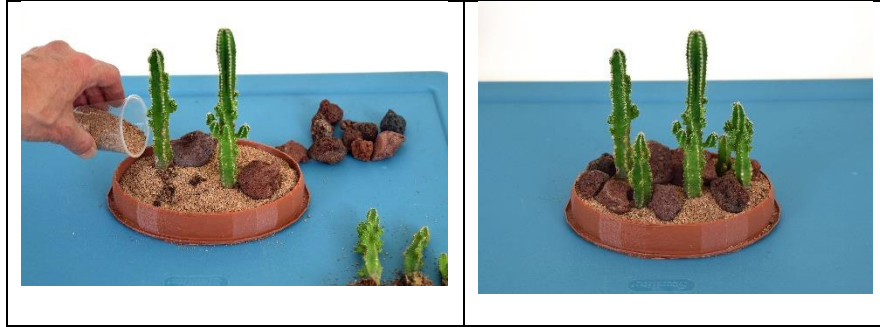


Type of cactus: *Acanthocereus Tetragonus*

Instructions:

Planting:

- It is recommended to do planting activities on a tray (like a cookie sheet/baking pan) or in a shallow box, to keep soil from scattering and minimize cleanup.
- Fill pot about ½ full with soil.
- Place cactus where desired and push partway into soil. Pour more soil around cactus base to stabilize. Use planting/watering cup as scoop for soil.
- Use rocks to stabilize cactus as well.
- Try to push all roots into soil if possible.
- When done, soil should be just below pot rim
- Cactus may be planted as close to each other as roots allow.
- Use rocks to brace cactus and keep them standing upright (until the roots get established).
- Note: Extra soil and rocks are included, which can be discarded or saved for later use.



Care:

After planting:

- Water with approximately one watering cup (3 oz).
- After watering, remove some stones to allow the soil to breathe. (Supplies contain extra stones.)

Watering:

- Water **approximately** one watering cup (3 oz) per week.
- **Water only when soil is completely dry** (when soil at bottom of pot is dry)
- Water sparingly, and do not overwater. (Better to water too little than too much.)



- Leave some dry soil in the pot, to absorb any excess water



- **Do not saturate pot with water, or allow plants to sit in wet soil for days.**

- If soil becomes saturated (e.g. due to rain), tilt pot at one end so it drains out from end hole (see below):



- **WARNING:** Do not let soil stay wet for days or cacti may rot at the base

Light:

- **Inside:** High light (as much light as possible)
- **Outside:** partial day or dappled sunlight

Temperature and Humidity:

- These cacti prefer warmth and humidity.
 - Prefer outside during summer
 - Prefer inside when overnight temps get down to 50 °F.
- Do not let these cactus freeze.

Shaping and Pruning:

- Do not shape or prune until the newly planted cactus roots are established (approx. one month after planting)
- Shaping
 - The little buds grow into arms.
 - Choose the buds where you want arms to grow, then pinch off the other active buds nearby.





Before



After



- Pruning (for height)
 - Once a cactus grows tall enough, you can limit its future height, so it doesn't outgrow the pot. To do so:

1) Using sharp, sterile scissors, cut off the tip at the desired height:	
Before	After
	
2) Then round off the corner of each rib:	
3) When all the corners are trimmed, it will leave a rounded top on the cactus:	
4) After drying, it looks natural:	